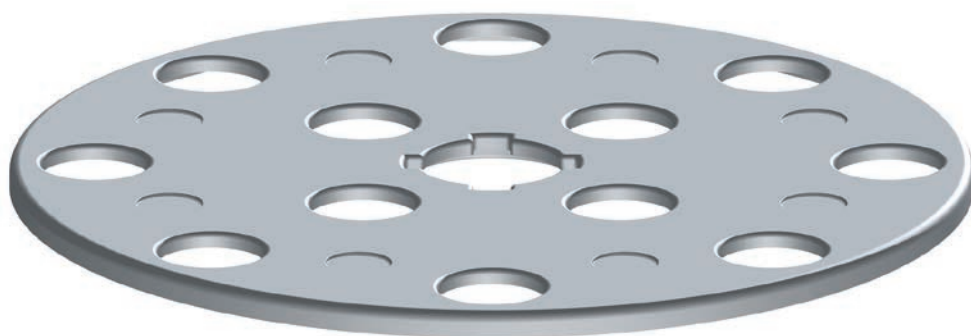




1



2

Le **RONDELLE PER TASSELLI "FG" E "FGS"** vanno inserite nei tasselli "FG" ed "FGS" per poterli utilizzare anche con pannelli isolanti flessibili in lana di roccia o in lana di vetro.

*The **WASHERS FOR "FG" AND "FGS" PLUGS** must be inserted into "FG" and "FGS" plugs to be able to use them with rock wool or fibreglass flexible insulating panels as well.*

Rondella per tasselli "FG" e "FGS" / Washer for "FG" and "FGS" plugs

	Codice Code	Denominazione commerciale Name	A mm	B mm	Conf/pz Pcs/box
1	650-500-090-010	Rondella TL90 FG-35 e FGS-45/50 / Washer TL90 FG-35 and FGS-45/50	15,5	92	300
2	650-500-090-020	Rondella TL90 FG-35 e FGS-55 / Washer TL90 FG-35 e FGS-55	13	88	500

